



[Community Documentation](#)

[Ubuntu Documentation](#) > [Community Documentation](#) > [GraphicalInstall](#)

For a Video Tutorial on This Process Please Visit: <http://www.youtube.com/watch?v=w8a-smrPlvE&hd=1>

Installation

There are many common ways to install and run Ubuntu. You can run Ubuntu:

- as your sole operating system (single booting).
- in addition to another operating system (dual booting).
- within your existing operating system (virtualization). See [VirtualMachines](#) for installation options in a virtual environment.
- from your CD disc drive, using the Live CD.
- in addition to Windows, using Window's Boot Manager, via the [Wubi](#) installation

NOTE: Prior to installing Ubuntu, it is recommended that you back up your computer. If things do go wrong there are a number of options to get help listed on <http://www.ubuntu.com/support>

Acquiring Ubuntu

There are many ways to get an Ubuntu installation disk, these are detailed on the [GettingUbuntu](#) page. If you are planning on downloading and burning your own installation disk, please refer to [BurningIsoHowto](#).

To acquire Ubuntu, you can order a free CD from Canonical or purchase a CD or DVD from a distributor. You can also download and burn the image to a CD or DVD. You can download the Ubuntu installer from Canonical. Downloading the installer requires a blank CD or DVD, and a CD or DVD burner that is capable of burning disc images.

To download Ubuntu:

1. Using your web browser, navigate to <http://www.ubuntu.com/getubuntu/download>
2. Select Desktop Edition, and then click Ubuntu 9.04.
3. In the Choose a download location near you menu, select the location closest to you.
4. Click Begin Download. A pop up window opens, prompting you where to run or save the file.
5. In Internet Explorer, click Run to automatically open the installation file in a CD burning utility or click Save to save the file to your disk. In Mozilla Firefox, select Open with to open the

installation file in a CD burning utility or select Save File to save the file to your disk.

After downloading the Ubuntu installation CD image, you need to burn it to a CD or DVD. See [BurningIsoHowto](#) for detailed instructions on burning ISO disk images.

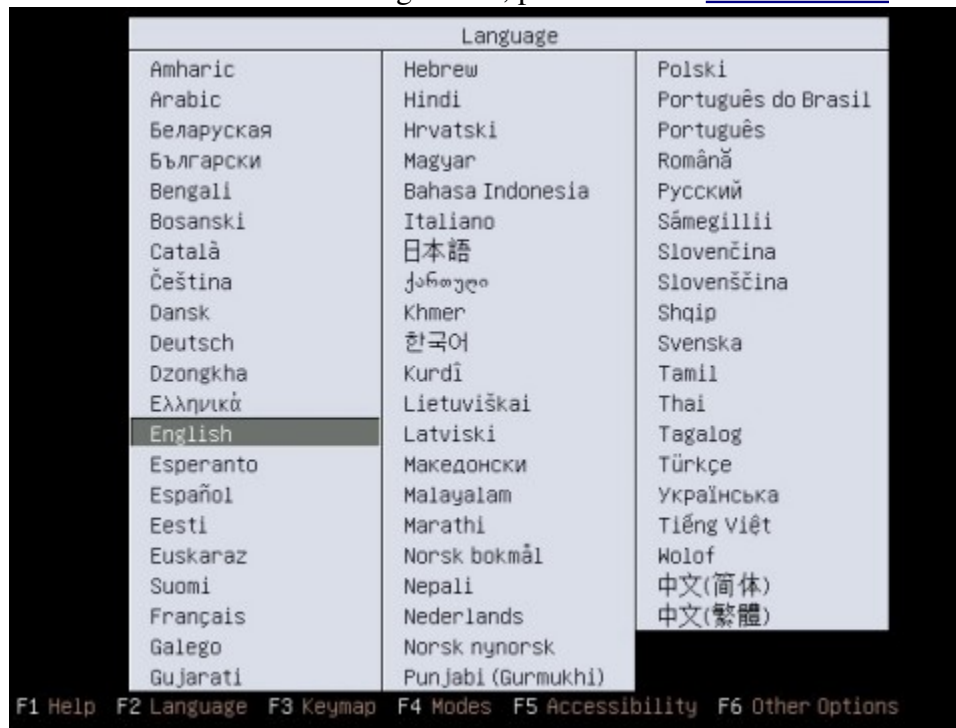
To burn the installation disk to a CD or DVD:

1. Place a recordable CD or DVD into your CD/DVD drive.
2. Load an application that is capable of burning .ISO image files to CDs or DVDs.
3. Using your CD and DVD writing program, copy the disk image to your blank CD or DVD.

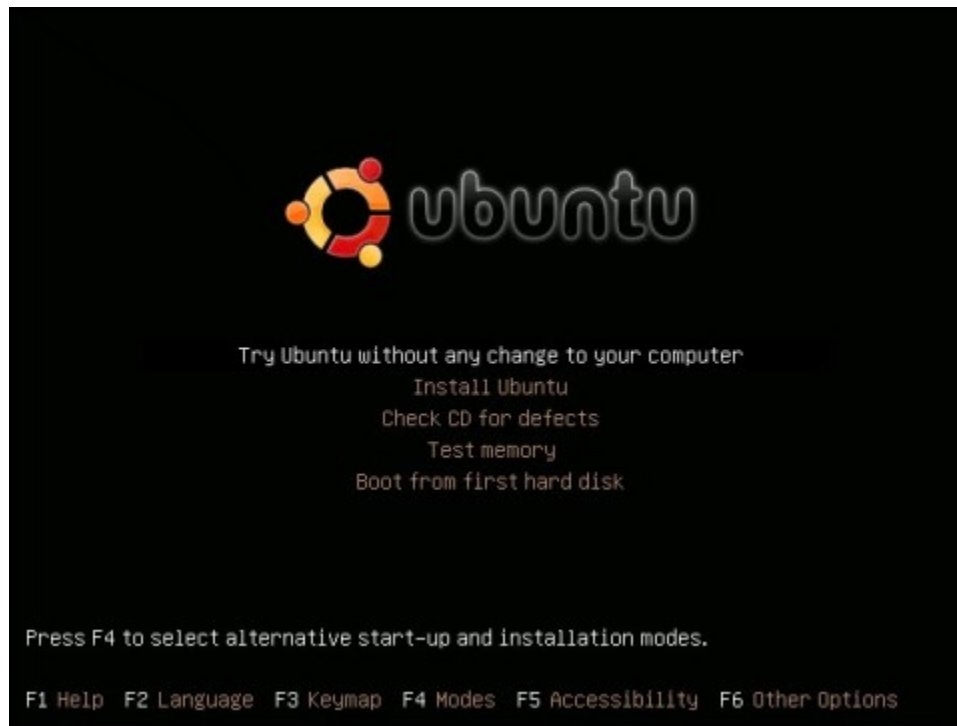
To Install Ubuntu

Ubuntu can be installed with the graphical CD. Make sure that your computer is set to boot from a CD before a hard drive.

1. Insert the Ubuntu disc into your CD drive.
2. Start or restart your computer. The Language screen appears. If you reboot your computer and do not see the following screen, please refer to [BootFromCD](#)



3. Select your desired language and press **Enter**. The startup window appears.



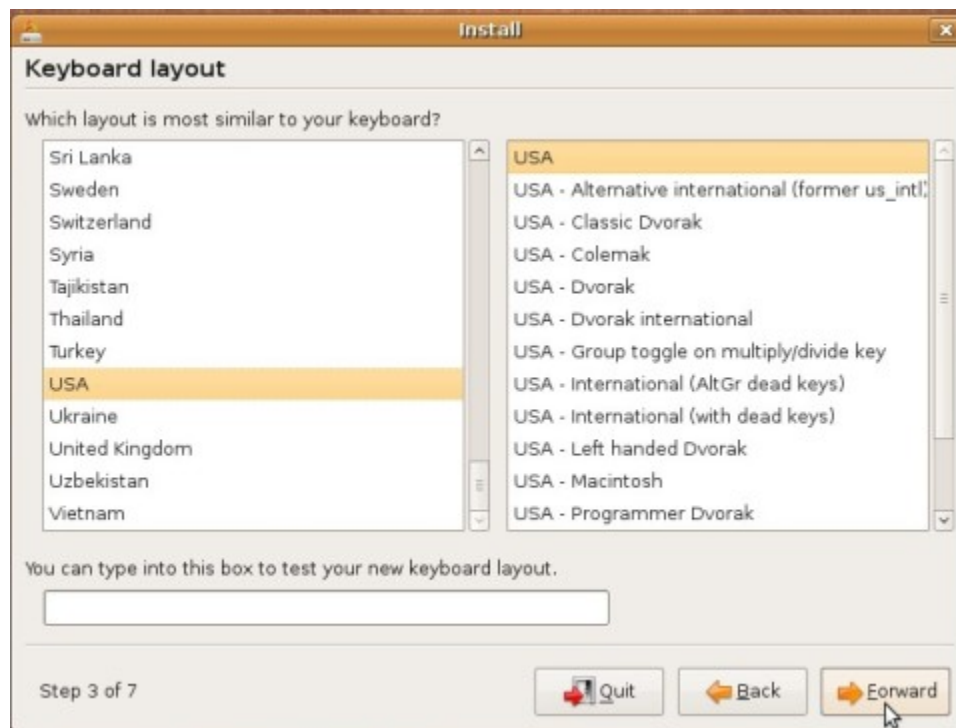
4. Select **Install Ubuntu** and press **Enter**. The Welcome window appears.



5. From the taskbar, choose your preferred language. Click **Forward**. The Where are you? window appears.

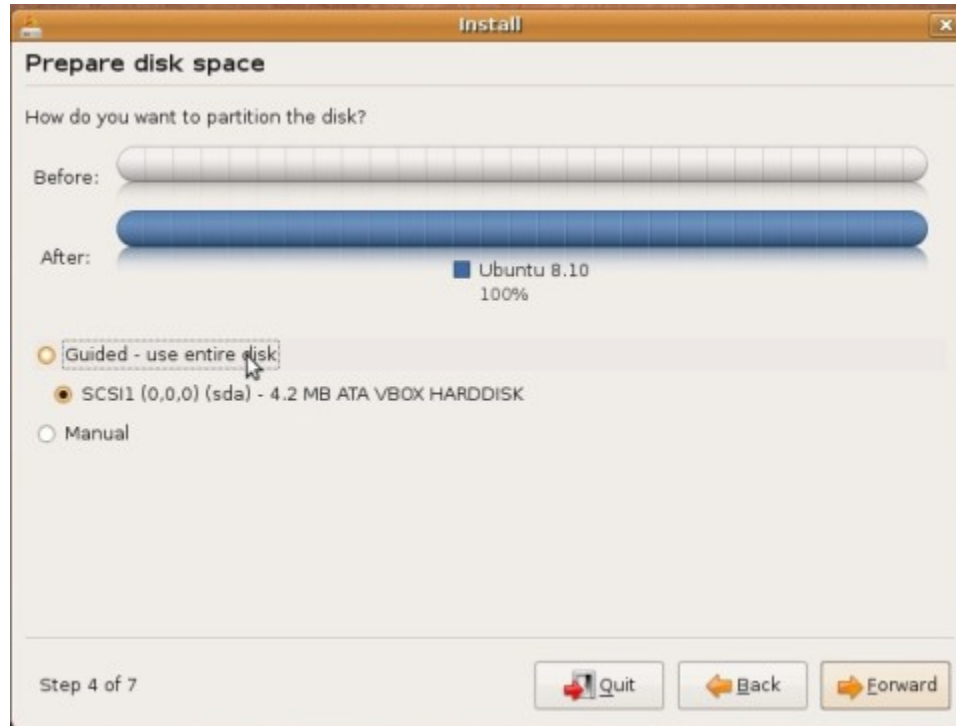


- From the Selected city box, choose your closest location. Click **Forward**. The Keyboard layout window appears.



- Select your keyboard layout. To test if you have chosen the correct layout, enter characters in the text box. Click **Forward**. The Prepare disk space window appears.

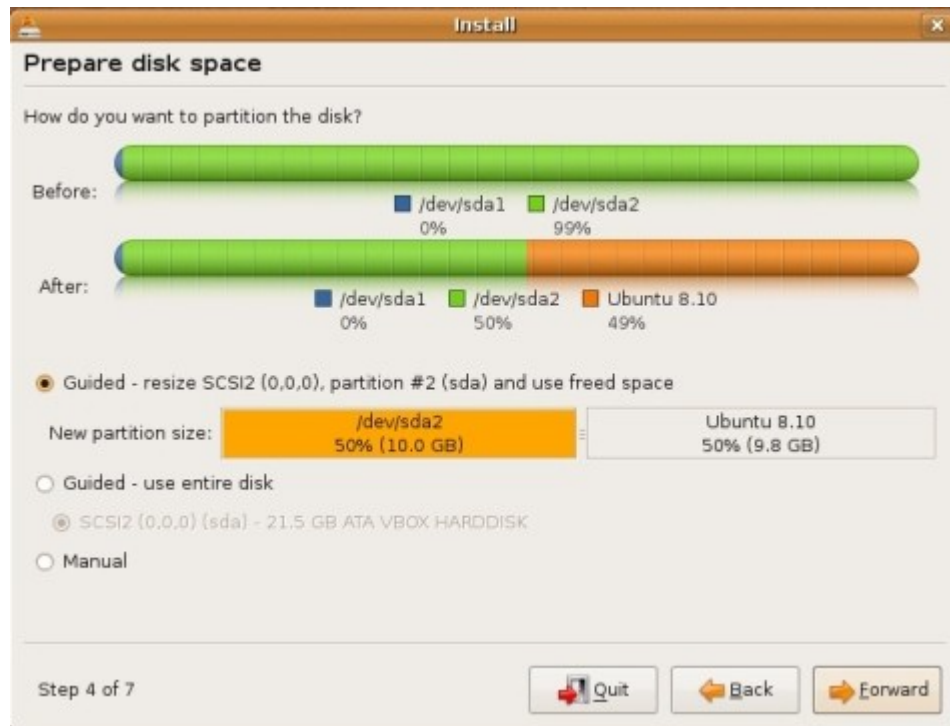
8. If you want to install Ubuntu over your entire hard drive, then Select **Guided – use entire disk** and select the hard drive that you want to install Ubuntu. Click **Forward**. The Who are you? window appears.



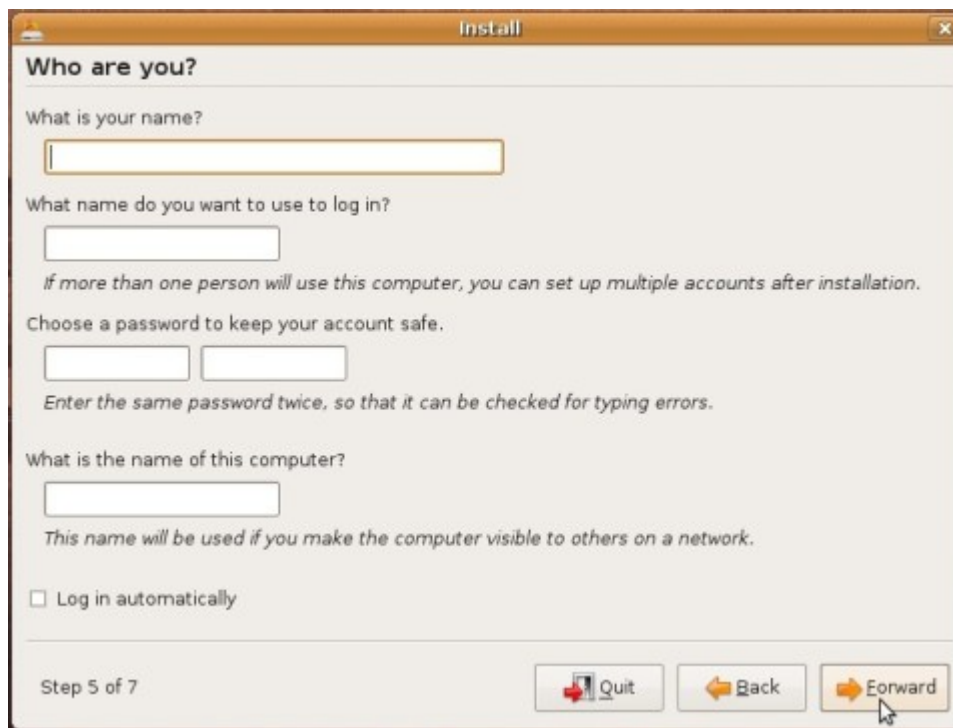
WARNING: Installing Ubuntu on your entire hard disk will erase all data that is currently on the drive.

OR

8. If you want to install Ubuntu on a single partition [Dual Booting](#), Select **Guided – resize**. In the New partition size area, drag the area between the two partitions to create your desired partition sizes. Click **Forward**. The Who are you? window appears.



9. In the What is your name? field, enter your name.



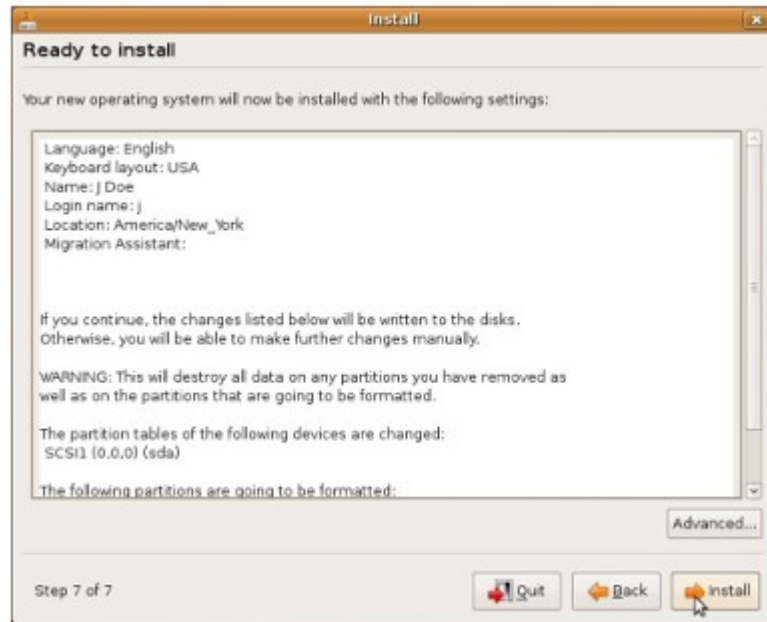
10. In the What name do you want to use to log in? field, enter a login name.

11. In the Choose a password to keep your account safe field, enter a password in both text boxes.

12. In the What is the name of your computer? Field, enter a name to identify your computer.

13. If you are the only user and wish to avoid the login screen, check **Log in automatically** (optional).

14. Click **Forward**. The Ready to install window appears.



15. Verify that the language, layout, location, and personal information are correct and click **Install**. The installation wizard begins.

16. When the installation wizard finishes, the installation complete window appears.

Click **Restart now** to restart your computer. Ubuntu is now installed.



[Category Installation](#)

GraphicalInstall (last edited 2009-06-02 00:02:21 by [Brian Pitts](#))

- [Page History](#)

The material on this wiki is available under a free license, see [Copyright / License](#) for details
You can contribute to this wiki, see [Wiki Guide](#) for details